

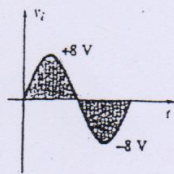
ANSWER ALL QUESTIONS

Question One: (10 MARKS)

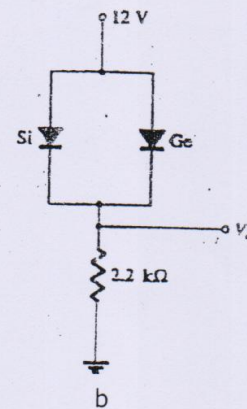
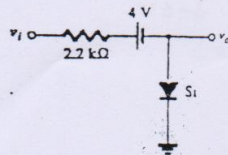
- 1-a) What are the advantages of BJT and the advantages of FET?
- b) Write the equations whose control the operation of the BJT and the FET.
- c) What are the meaning of Bipolar and unipolar device ?

Question Two: (12 MARKS)

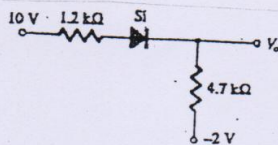
2-Determine  $V_o$  for the following circuits:



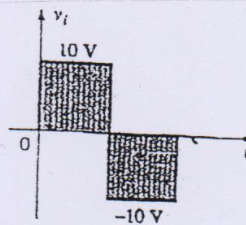
a



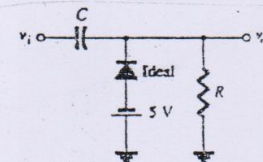
b



c



d



Question Three: (8 MARKS)

- 3- Explain the structure and operation of n-channel JFET

Question Four: (10 MARKS)

- 4- For the circuit shown in Fig.1, determine  $I_B$ ,  $I_C$ ,  $I_E$ ,  $V_B$ ,  $V_C$ ,  $V_E$ ,  $V_{CB}$ ,  $V_{CE}$ .

**Question Five:** (10 MARKS)

5- Design a fixed bias circuit with  $V_{CC}=20\text{V}$ ,  $\beta=100$ ,  $I_C=3\text{mA}$ ,  $V_{CE}=5\text{V}$ .

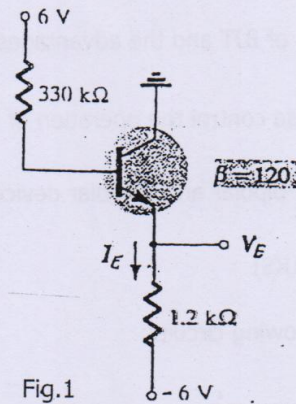


Fig.1

Good Luck

Prof. Ahmed Samra